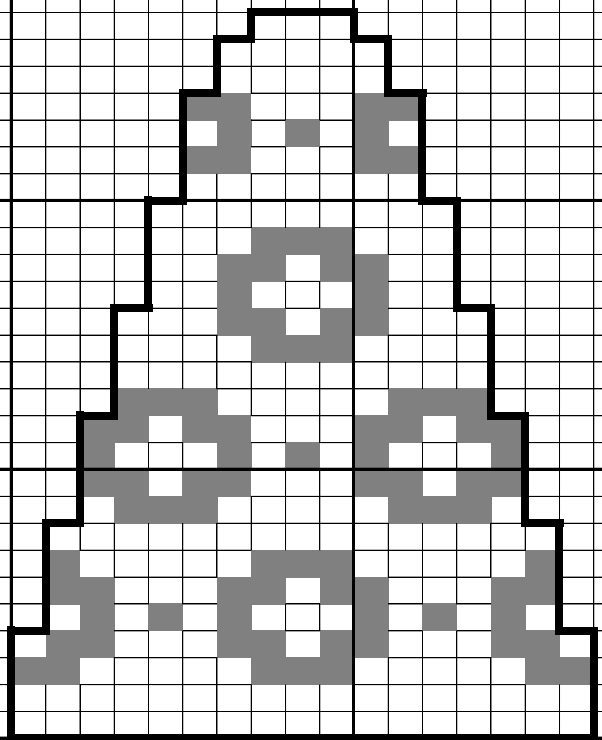
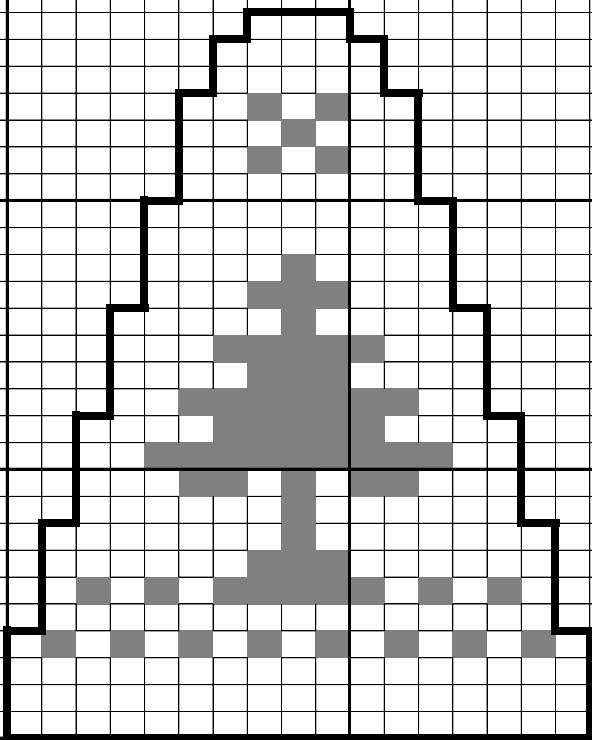
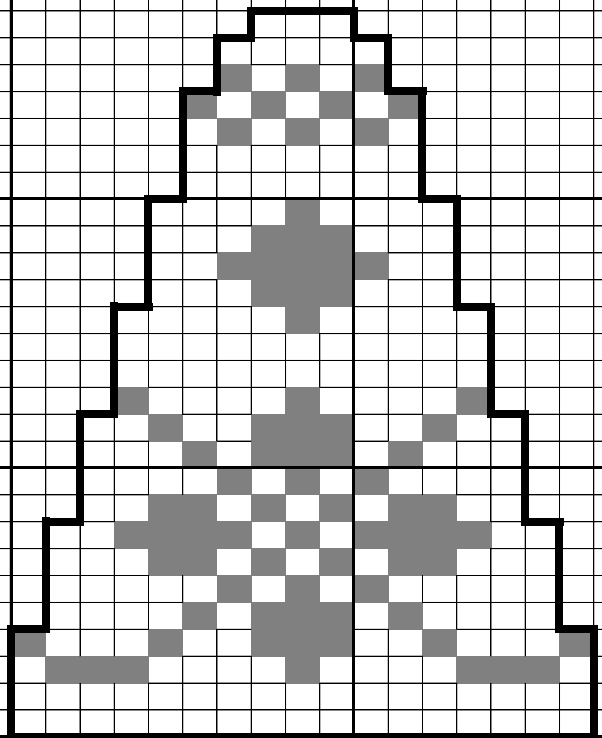
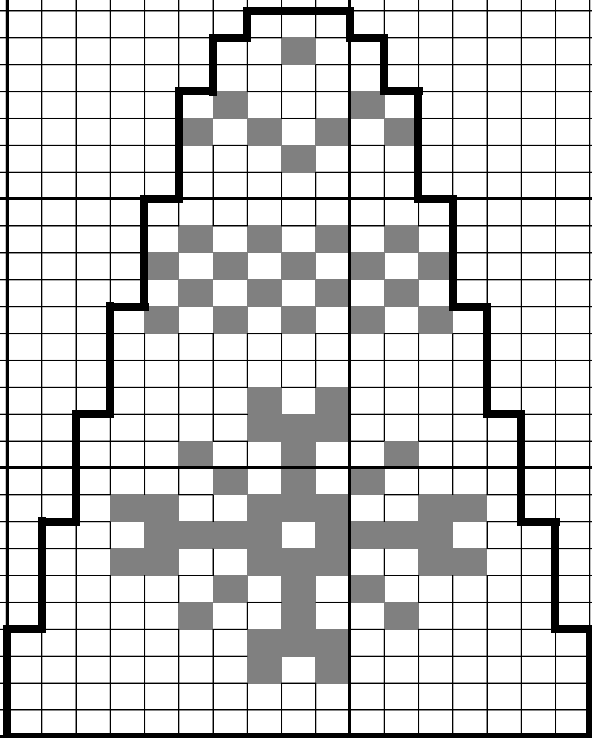




Size 5 double point needles

Trunk - CO 6 sts, P 1 row, K 1 row, P 1 row, BO

Decrease rows: k1, k2tog - last 3 sts, ssk, k1



Size 5 double point needles

Trunk - CO 6 sts, P 1 row, K 1 row, P 1 row, BO

Decrease rows: k1, k2tog - last 3 sts, ssk, k1

